

TOTAL WIND LOADING FROM DISCRETE ANCILLARY ITEMS SPREAD EVENLY OVER LENGTH OF MAST HEAD NOT TO EXCEED 1750 N AT 150 km/h WIND. TOTAL WEIGHT OF ANCILLARIES EXCLUDING FEEDER CABLES IS 150kg.

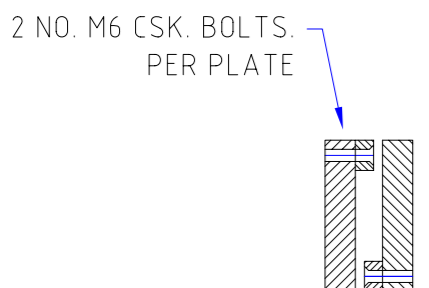
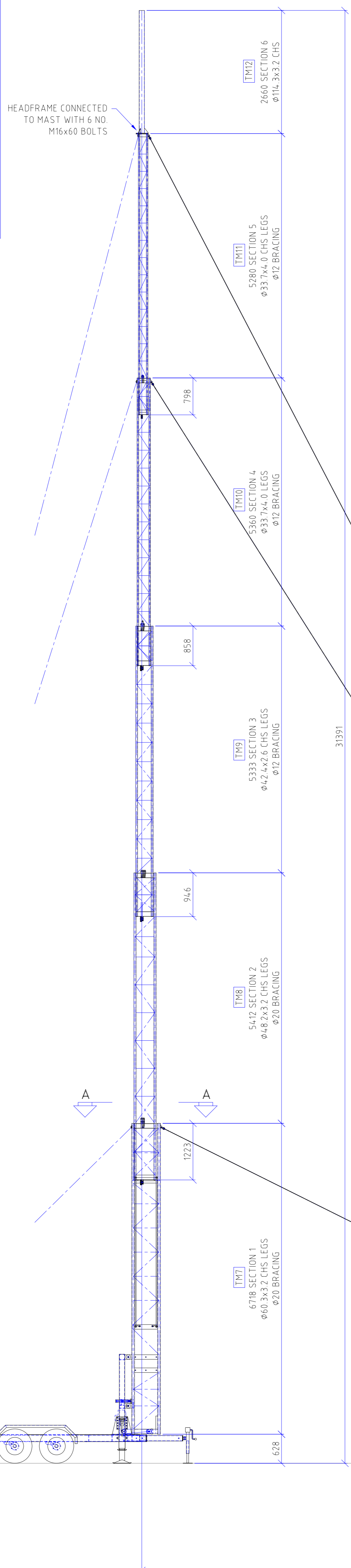
MAX. WIND SPEED FOR SURVIVAL IS A MEAN 10 MINUTE WIND SPEED OF 31.35 m/s (113 kph, 70 mph) AT A HEIGHT OF 10m ABOVE GROUND LEVEL AT THE LOCATION OF THE MAST.

TYPICAL MAXIMUM CAPACITY ANTENNA LAYOUT:

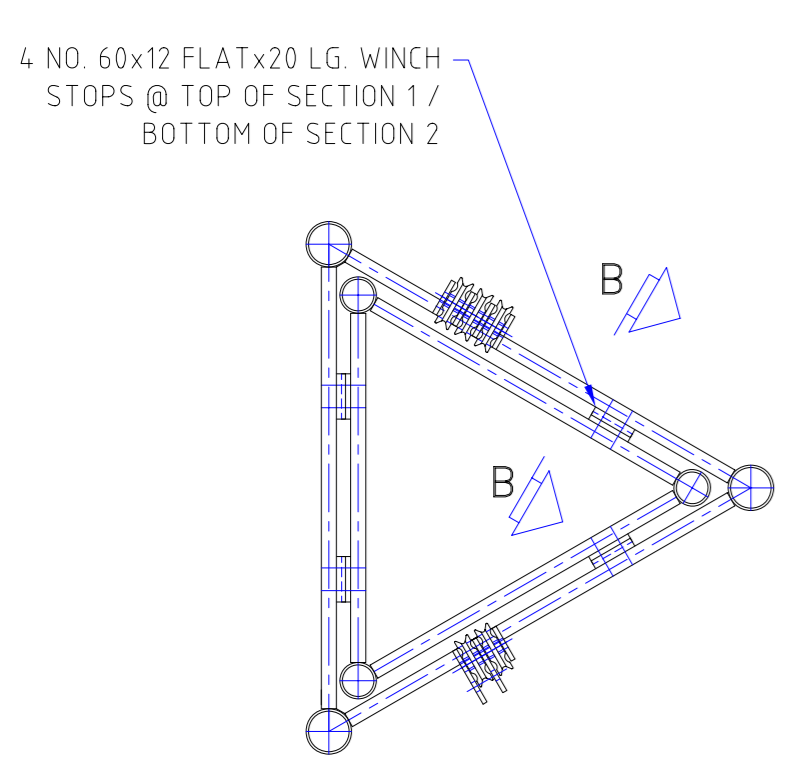
UMTS SIX SECTOR UPPER ANTENNA ARRANGEMENT COMPRISED OF 3 NO. 2 SECTOR ANTENNAE OF APPROXIMATE FRONT AREA OF 1300 HIGH BY 380 WIDE.

GSM THREE SECTOR LOWER ANTENNA ARRANGEMENT COMPRISED OF THREE NO. SINGLE SECTOR ANTENNAE OF APPROXIMATE FRONT AREA OF 1400 HIGH BY 260 WIDE.

THE ABOVE STATED ANTENNA LAYOUT IS FOR GUIDANCE ONLY. ALWAYS REFER TO ANTENNA MANUFACTURERS PUBLISHED DRAG FIGURES FOR DETAILED HEAD LOADS



SECTION B - B
WINCH STOP DETAIL
SCALE 1:10



SECTION A - A
WINCH STOP DETAIL
SCALE 1:10

TOWER DESIGN COMPLIANCE INCLUDES:

- BS EN 1991-1-4: ACTIONS ON STRUCTURES-WIND ACTIONS
- BS EN 1993-3-1: DESIGN OF STEEL STRUCTURES - TOWERS AND MASTS.
- BS EN 1993-1-1: DESIGN OF STEEL STRUCTURES - GENERAL RULES
- BS EN 1993-1-11: DESIGN OF STEEL STRUCTURES - DESIGN OF STRUCTURES WITH TENSION COMPONENTS

STEELWORK:

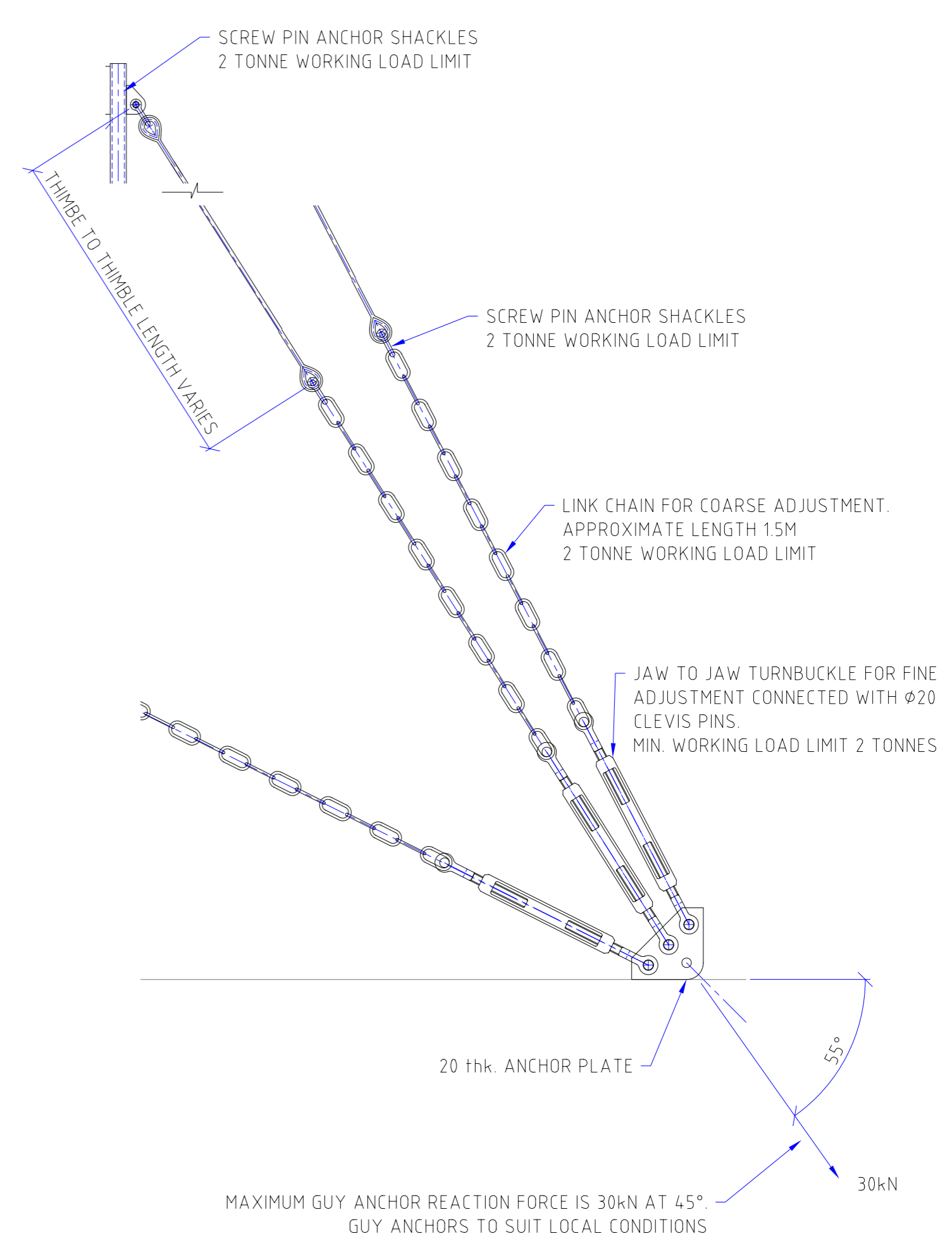
1. ALL MATERIAL M.S. TO BSEN10025 S275.
2. ALL WELDING TO BS EN 1011.
3. ALL WELDS TO BE 6mm CONTINUOUS FILLETS FULL PROFILE UNLESS STATED OTHERWISE. SLAG AND SPATTER TO BE REMOVED.
4. SURFACE FINISH - HOT DIPPED GALVANISED, MEAN COATING 120 MICRONS
5. ALL FIXING BOLTS TO BE STAINLESS STEEL.

WIRE ROPE:

1. ALL GUY ROPES TO BE 1960 GRADE Ø8 STEEL CORE 7x19 GALVANISED WIRE ROPE TO BS EN 12385-4.
2. ALL GUY TERMINATIONS TO BE THIMBLES TO BS464-1958 PART 1.
3. ALL WINCH ROPES TO BE AS PER WINCH MANUFACTURERS RECOMMENDATIONS
4. ALL WINCH ROPE TERMINATIONS TO BE SOLID THIMBLES TO BS464-1958

SHEAVE WHEELS:

1. ALL SHEAVES TO BE M.S. TO BSEN10025 S275. WITH PHOSPHOR BRONZE BUSHES.
2. ALL SHEAVE WHEELS TO HAVE M12 STAINLESS STEEL SHEAVE PINS SECURED WITH WASHERS & NYLOCK NUTS



GUY RIGGING DETAIL
SCALE 1:10

GUY ROPE SECTION 5
Ø8 WIRE ROPE WITH THIMBLE ENDS
30.8m THIMBLE TO THIMBLE

GUY ROPE SECTION 4
Ø8 WIRE ROPE WITH THIMBLE ENDS
26.2m THIMBLE TO THIMBLE

GUY ROPE SECTION 1
Ø8 WIRE ROPE WITH THIMBLE ENDS
14.8m THIMBLE TO THIMBLE

THIS MATERIAL DESCRIBES A PROPRIETARY DESIGN OWNED BY UPSHOT UK LTD. POSSESSION OF THIS MATERIAL DOES NOT CONVEY THE RIGHT TO REPRODUCE THIS MATERIAL IN WHOLE OR IN PART, NOR THE RIGHT TO MANUFACTURE ARTICLES FROM THIS MATERIAL OR ANY REPRODUCTION THEREOF.

UPSHOT

Upshot UK. Ltd
260 BENTLEY WAY
AMPRESS PARK
LYMINGTON
SO41 8JW
0044 (0)1590670845
info@upshot-uk.com

MOD No	DATE	DETAILS OF MODIFICATION	CHECKED	DRAWN BY
A	27.01.12	MINOR MODIFICATIONS	P.M.	P. MATHAR
B	27.01.12	MARK NUMBERS ADDED, SECTION SIZES AMENDED	P.M.	
C	07.02.12	GUY DETAILS ADDED	P.M.	DATE 25.01.12
D	15.05.12	WINCH STOP DETAILS ADDED	P.M.	CHECKED / APPROVED BY G. COOKE
E	30.07.12	SURVIVAL WIND SPEED REVISED	G.E.C.	DATE 25.01.12

TITLE

GENERAL ARRANGEMENT
30m MOBILE BROADCASTING TOWER
TRAILER MOUNTED

ORIGINAL SCALE/FRACTION
1:100 @ A1

CONTRACT No
PM0861

DO NOT SCALE

DRG NO
PM0861-001-E