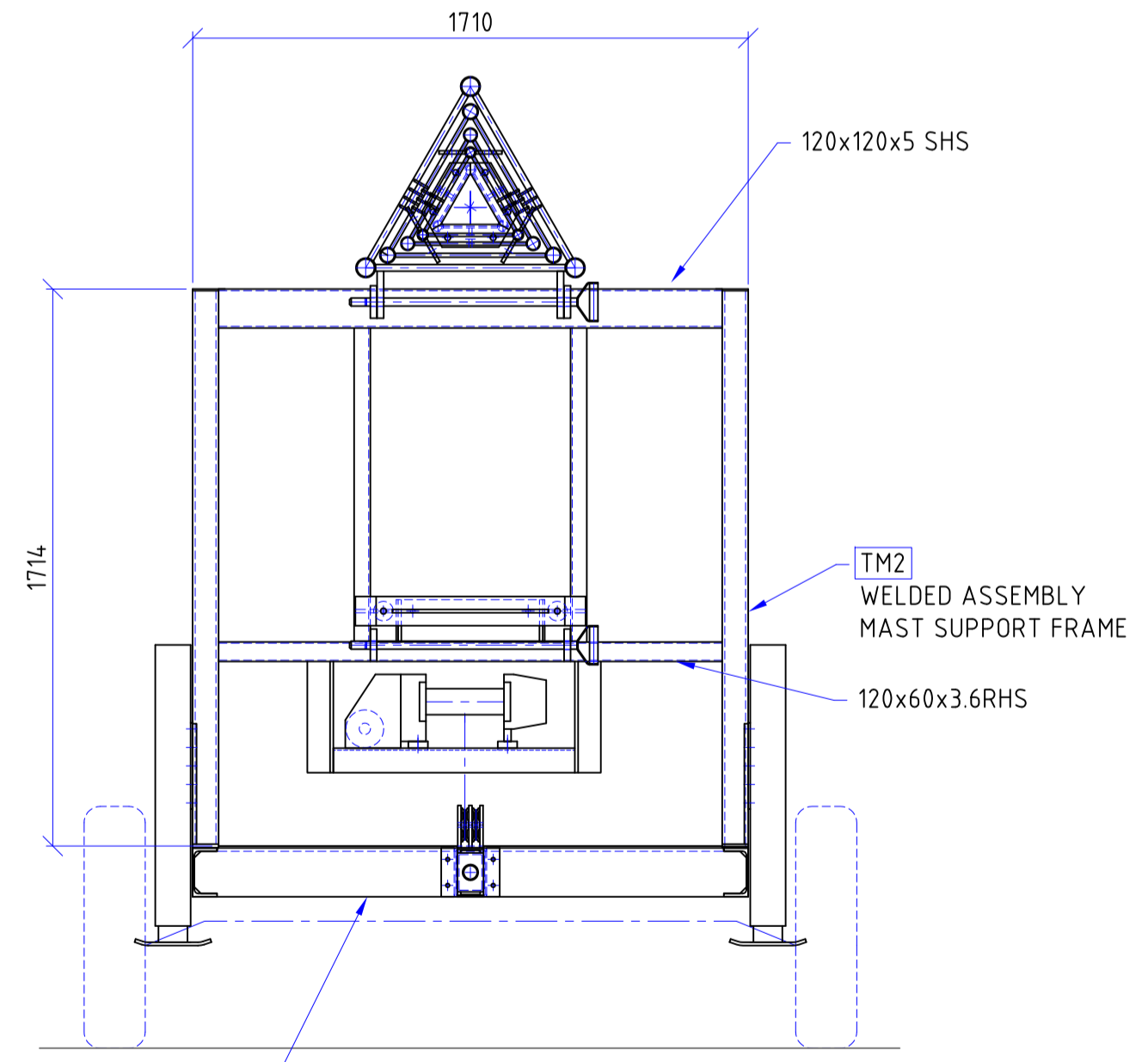
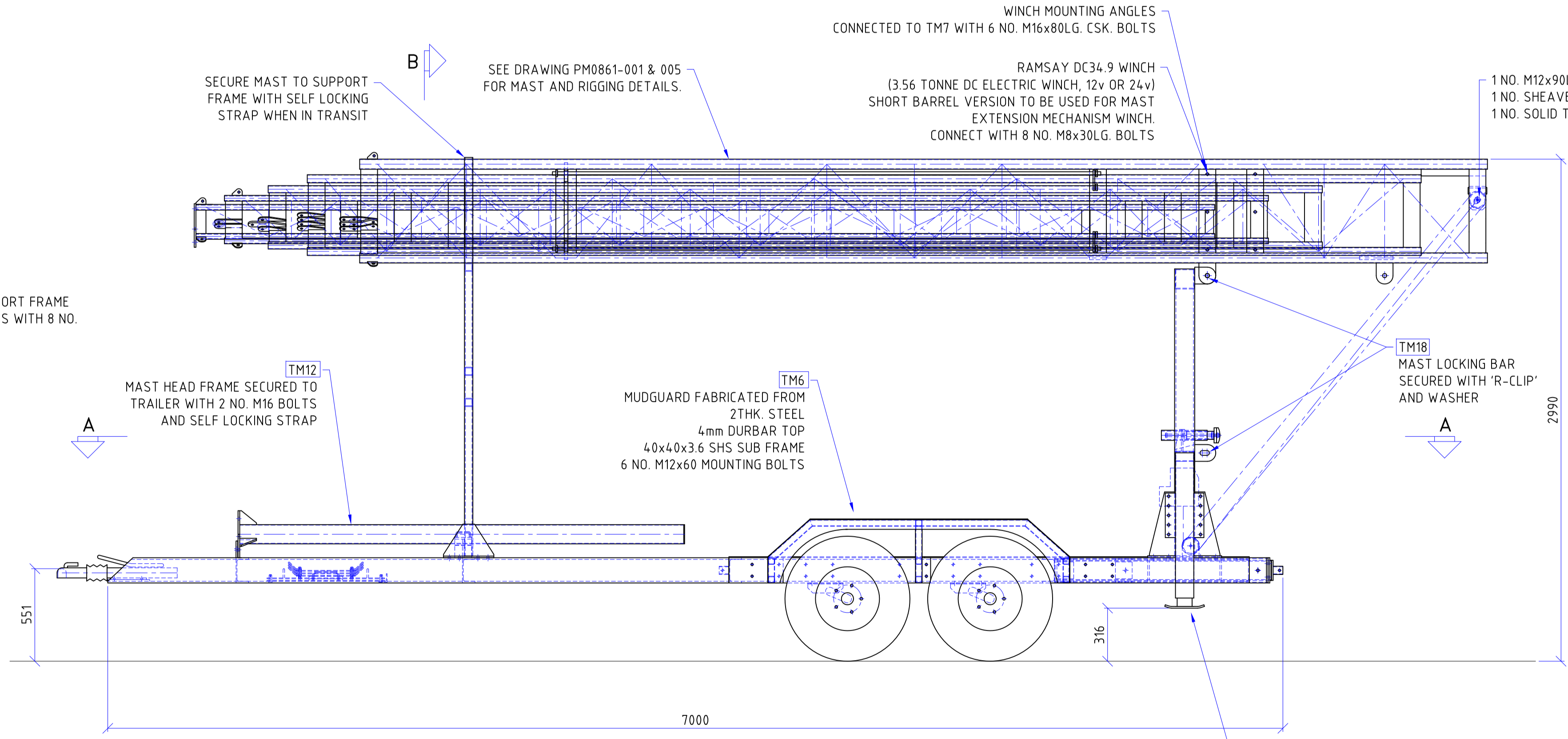
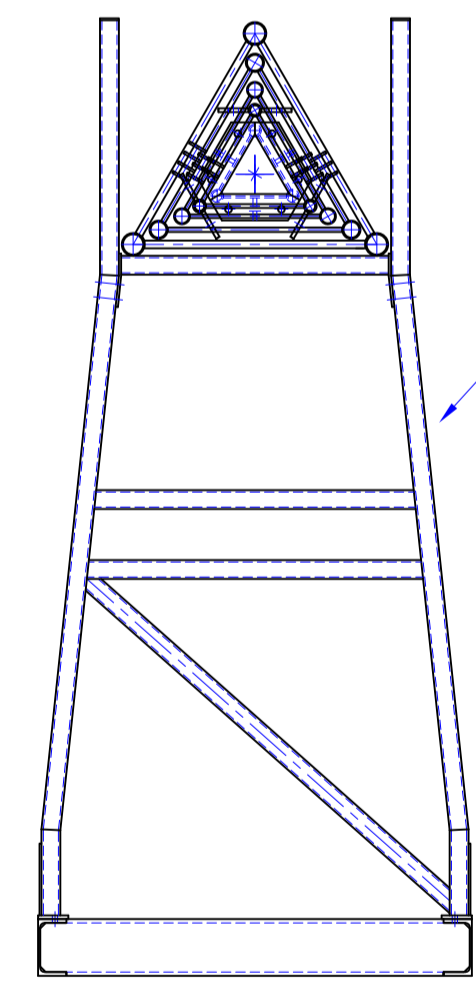
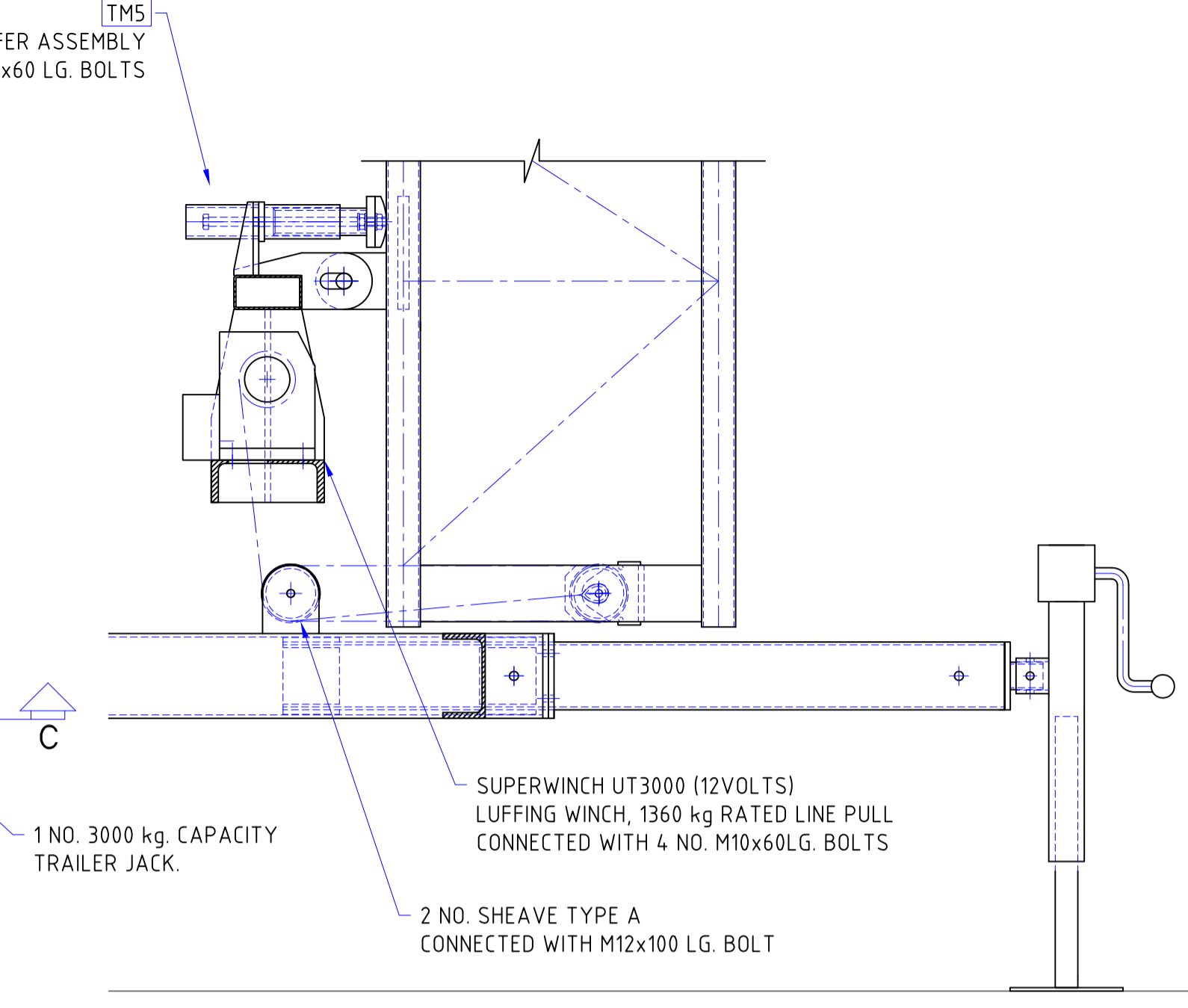
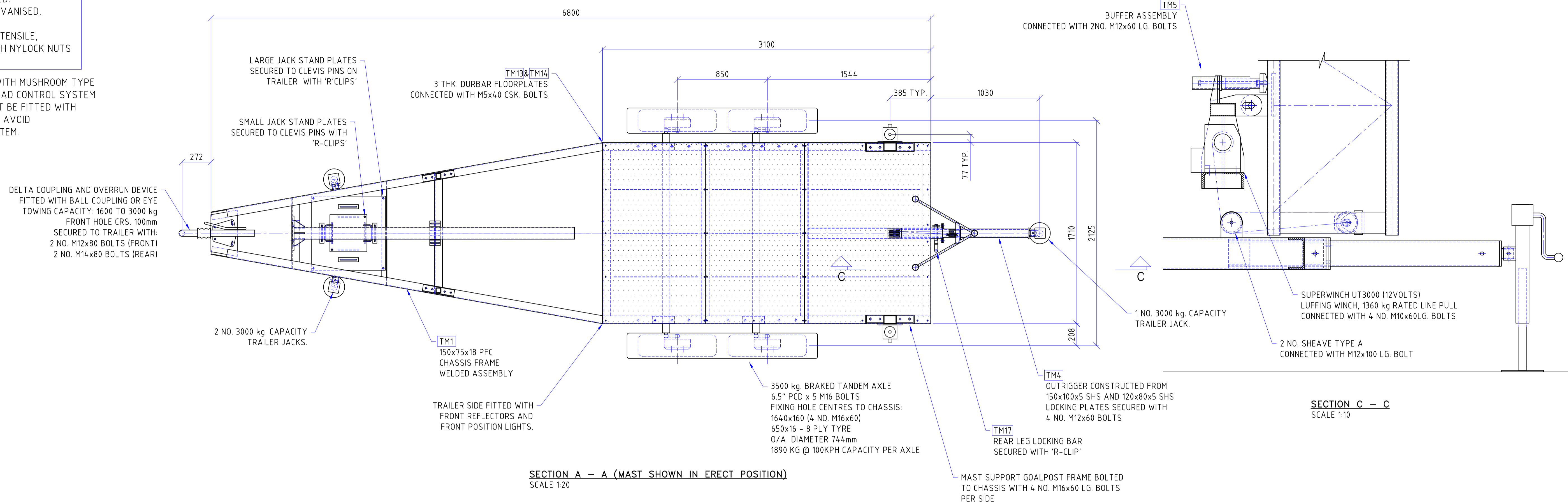


- STEELWORK NOTES:**
1. ALL MATERIAL M.S. TO BSEN10025 S275.
 2. ALL WELDING TO BS EN 1011.
 3. ALL WELDS TO BE 6M.M. CONTINUOUS FILLETS FULL PROFILE UNLESS STATED OTHERWISE, SLAG AND SPATTER TO BE REMOVED.
 4. SURFACE FINISH - HOT DIPPED GALVANISED, MEAN COATING 120 MICRONS
 5. ALL FIXING BOLTS GRADE 8.8 HIGH TENSILE, SPUN GALVANISED CONNECTED WITH NYLOCK NUTS AND WASHERS

ALL WINCHES ARE TO BE FITTED WITH MUSHROOM TYPE EMERGENCY STOP AND WANDERLEAD CONTROL SYSTEM WITH 4.5m LEAD. WINCHES MUST BE FITTED WITH PRE-SET LOAD LIMITER DEVICE TO AVOID OVER-TENSIONING THE MAST SYSTEM.



THIS MATERIAL DESCRIBES A PROPRIETARY DESIGN OWNED BY UPSHOT UK LTD. POSSESSION OF THIS MATERIAL DOES NOT CONVEY THE RIGHT TO REPRODUCE THIS MATERIAL IN WHOLE OR IN PART, NOR THE RIGHT TO MANUFACTURE ARTICLES FROM THIS MATERIAL OR ANY REPRODUCTION THEREOF.

UPSHOT
Upshot UK. Ltd
 260 BENTLEY WAY
 AMPRESS PARK
 LYMINGTON
 SO41 8JW
 0044 (0)1590670845
 info@upshot-uk.com

DRG No	DRAWING REFERENCE TITLE	MOD No	DATE	DETAILS OF MODIFICATION	CHECKED	DRAWN BY	TITLE
		A	27.01.12	MINOR MODIFICATIONS	P.M.	P. MATHAR	GENERAL ARRANGEMENT
		B	01.02.12	GOAL POST FRAME SECTION SIZES AMENDED, MUDGUARD CHANGED TO GALVANISED	P.M.		30m MOBILE BROADCASTING TOWER
		C	02.02.12	MUDGUARD MOUNTING BRACKETS ADDED, MARK NUMBERS ADDED	P.M.		TRAILER MOUNTED ON 3000 KG TRAILER
		D	13.02.12	FIXING HOLE CENTRES FOR AXLES ADDED	P.M.		
		E	15.02.12	DELTA COUPLING, AXLE AND JACK SPEC. AMENDED	P.M.		
		F	15.05.12	AMENDMENTS MADE AFTER TRIAL FITTING	P.M.		
		G	23.11.12	MODIFICATIONS TO ALLOW MAST TO BE TILTED FORWARD	G.C.		

ORIGINAL SCALE/FRAME: 1:20 @ A1
 CONTRACT No: PM0861
DO NOT SCALE
 DRG NO: **PM0861-000-G**