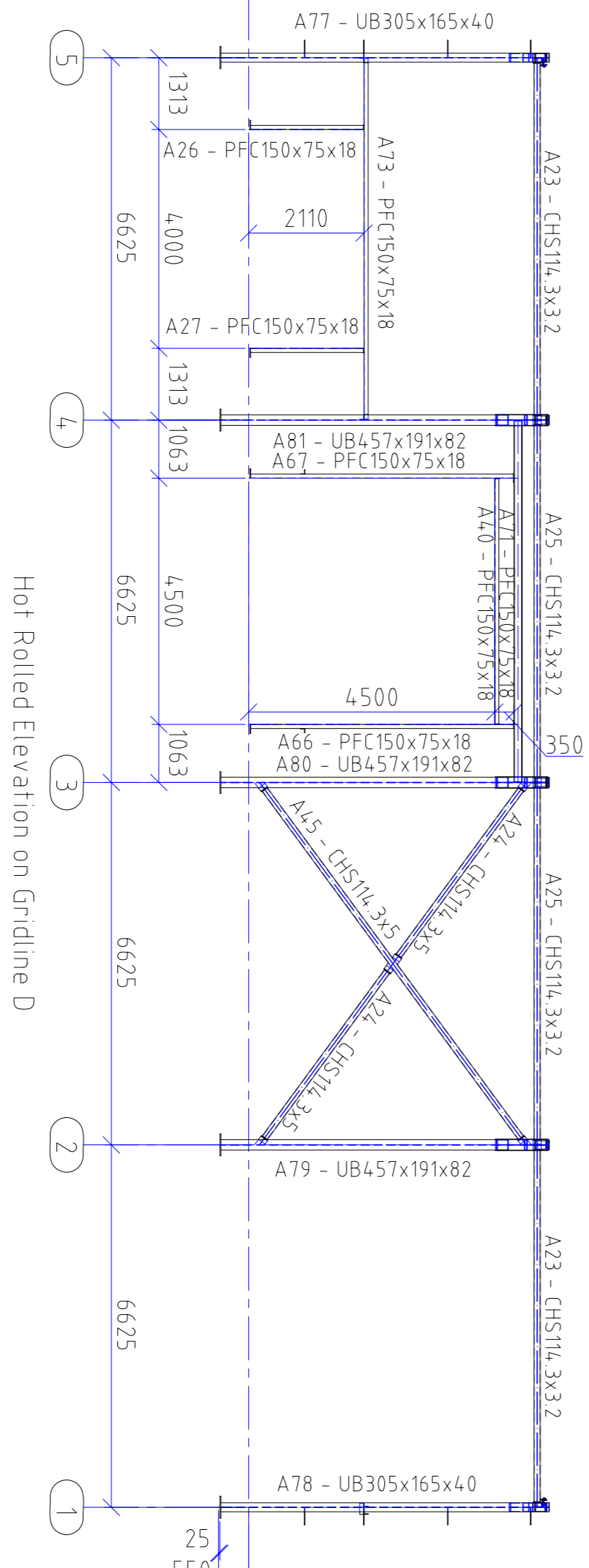
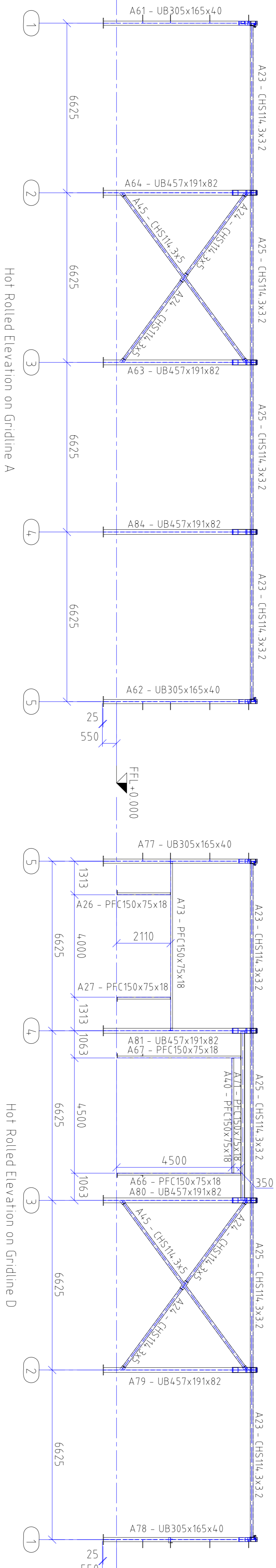
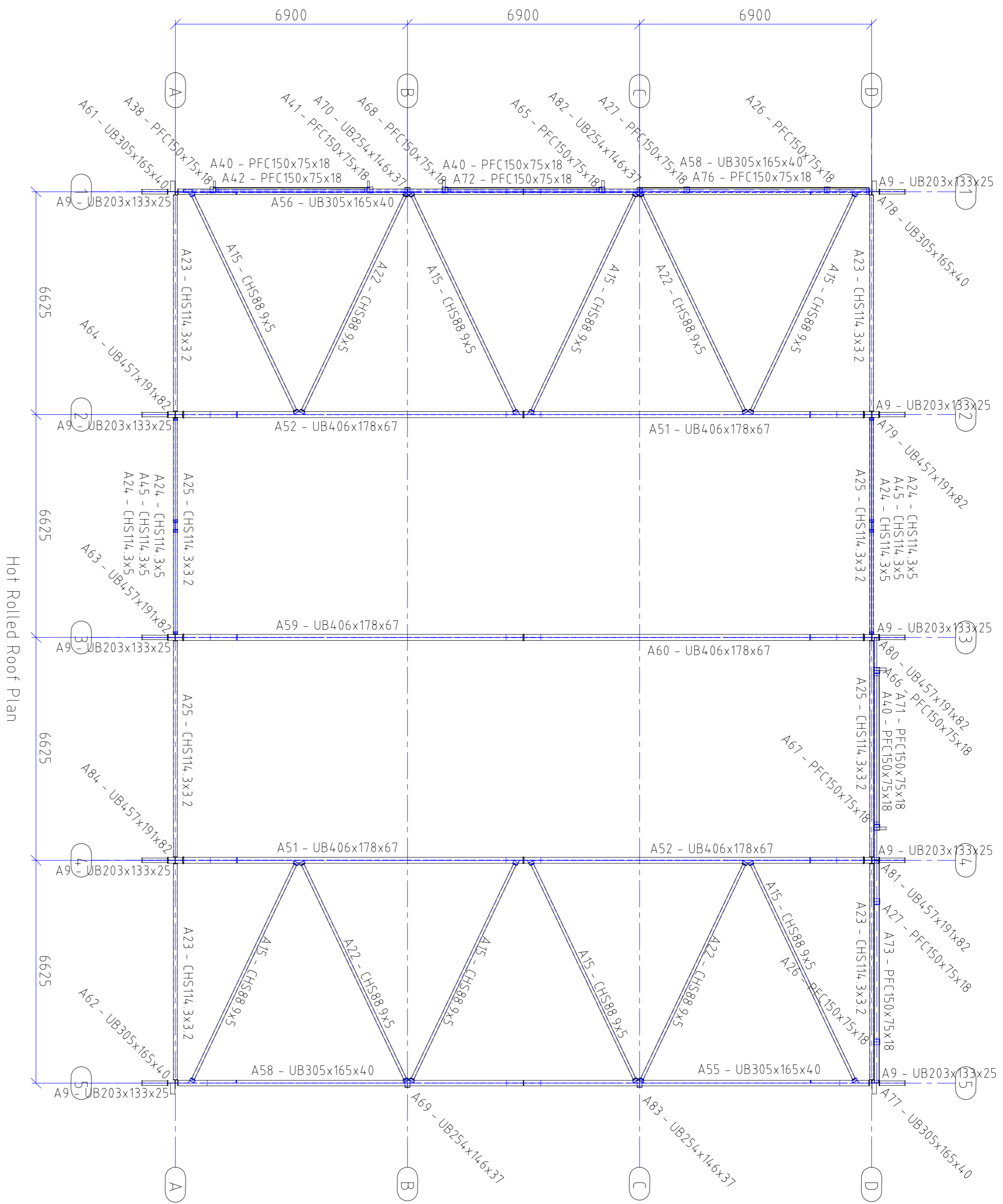
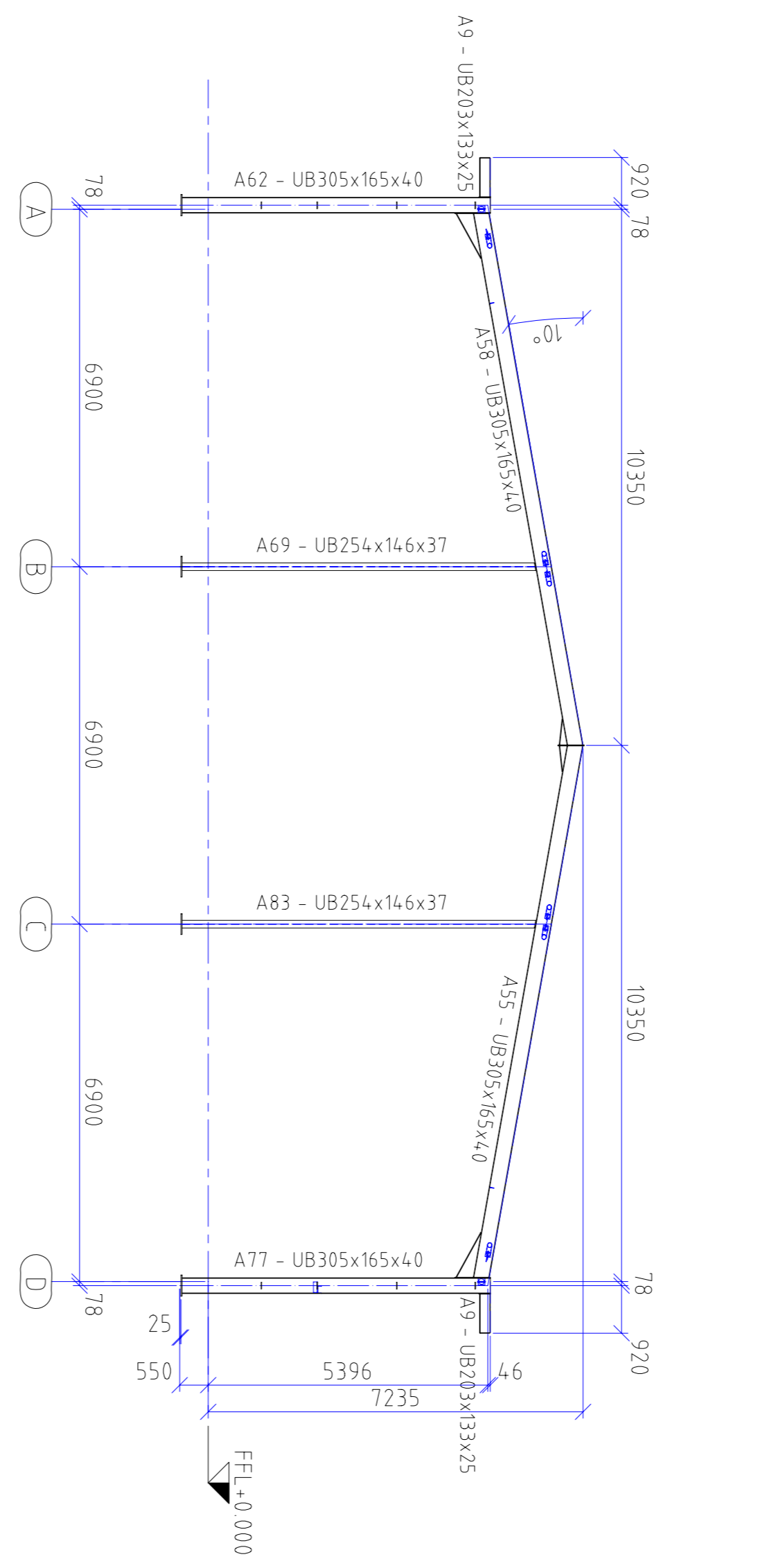
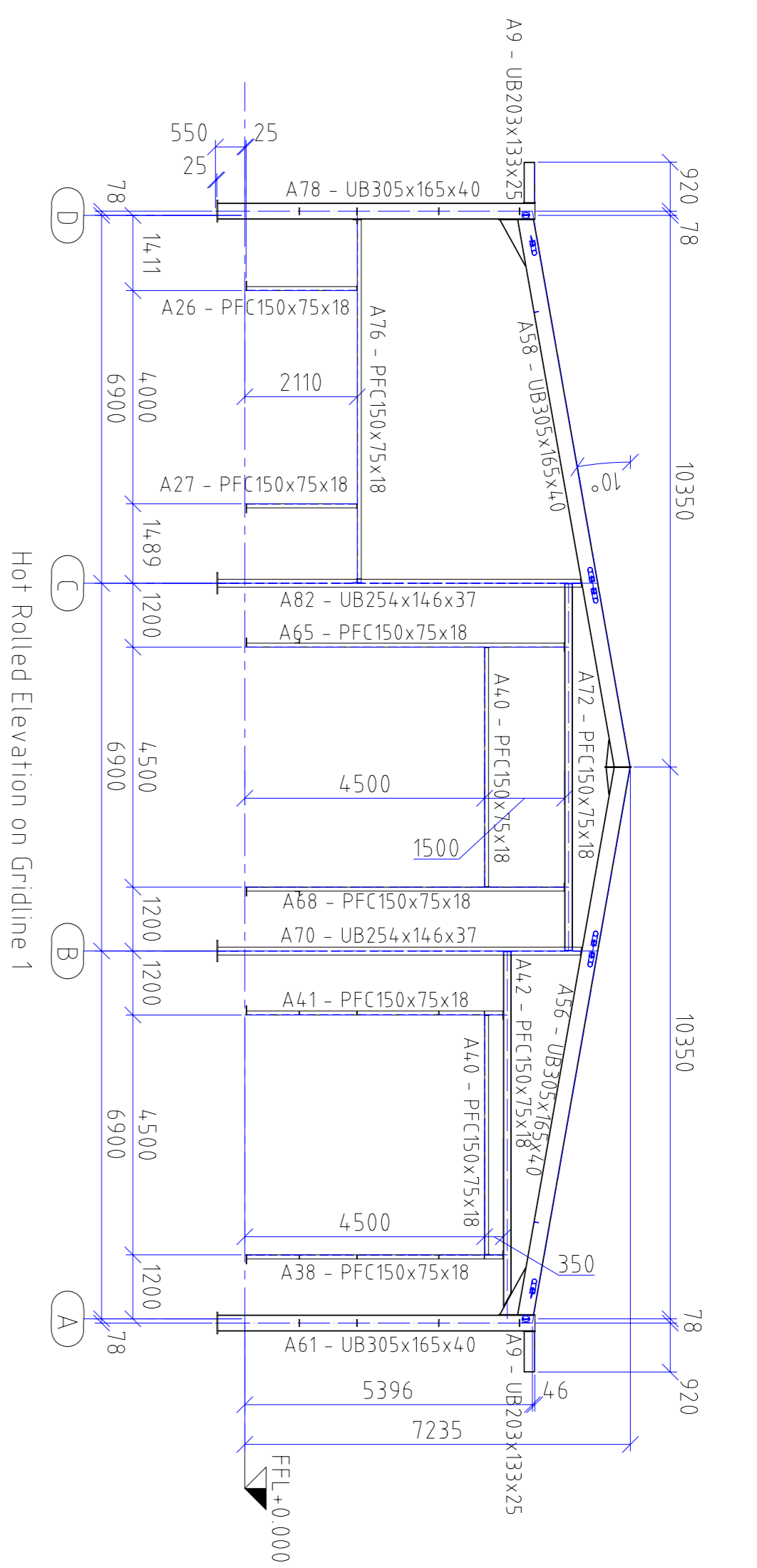


THIRD ANGLE PROJECTION



- GENERAL NOTES:
1. ALL MATERIAL M.S. TO BS EN 10025 S275
 2. ALL WELDING TO BS EN 1011
 3. ALL WELDS TO BE 6MM CONTINUOUS FILLETS FULL PROFILE UNLESS STATED OTHERWISE. SLAG AND SPATTER TO BE REMOVED.
 4. SURFACE FINISH - SHOT BLASTED TO SA 2.5 & COATED WITH 75 MICRONS OF ORGANIC ZINC RICH PAINT.
 5. ALL EXPOSED EXTERNAL STEELWORK HOT DIPPED GALVANISED, MEAN COATING 85 MICRONS
 6. ALL FIXING BOLTS GRADE 8.8 HIGH TENSILE, SHERIDIZED OR SIMILAR TO BRITISH STANDARD.

ORIGINAL SCALE/FRAME CONTRACT NO
1:100 @ A1 PM0514

DO NOT SCALE

DRG NO PM0514-000 A

		HI-SPEC ENGINEERING LTD UNIT 9 WINDHILL IND. EST. WINDHILL, GOWDY, GORNBALL, PL23 1HG TEL: 01726 833944 FAX: 01726 833911	
DRG No	DRAWING REFERENCE TITLE	CHECKED	DATE
		R.J.F.	02.06.10
REV No	DATE	CHECKED / APPROVED BY	DATE
A	02.06.10	G. COOME	27/05/2010
GENERAL REVISION		DRAWN BY	TITLE
		R. FAULDING	STEELWORK LAYOUT
			BURRATON ROAD
			SAL TASH
		CUSTOMER	BEAVER UK LTD