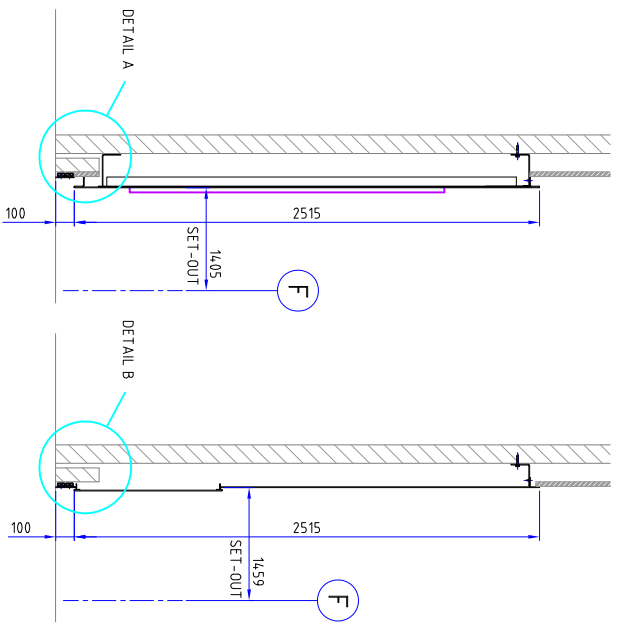
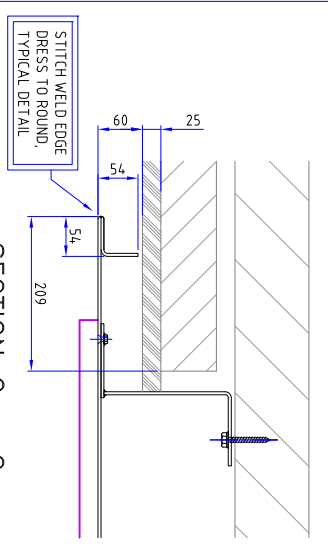


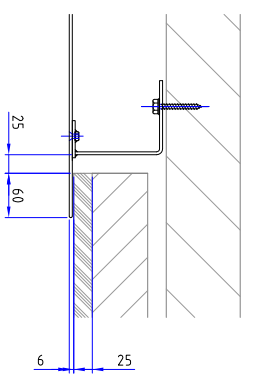
PLAN VIEW



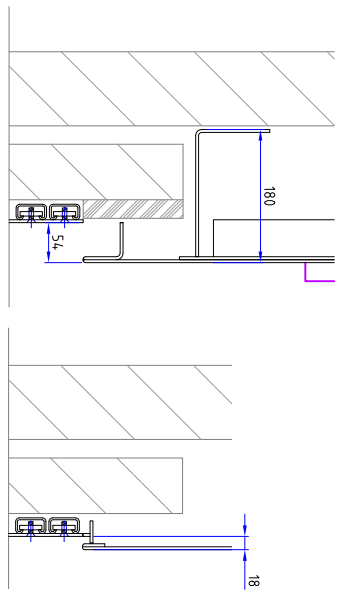
SECTION A - A SECTION B - B



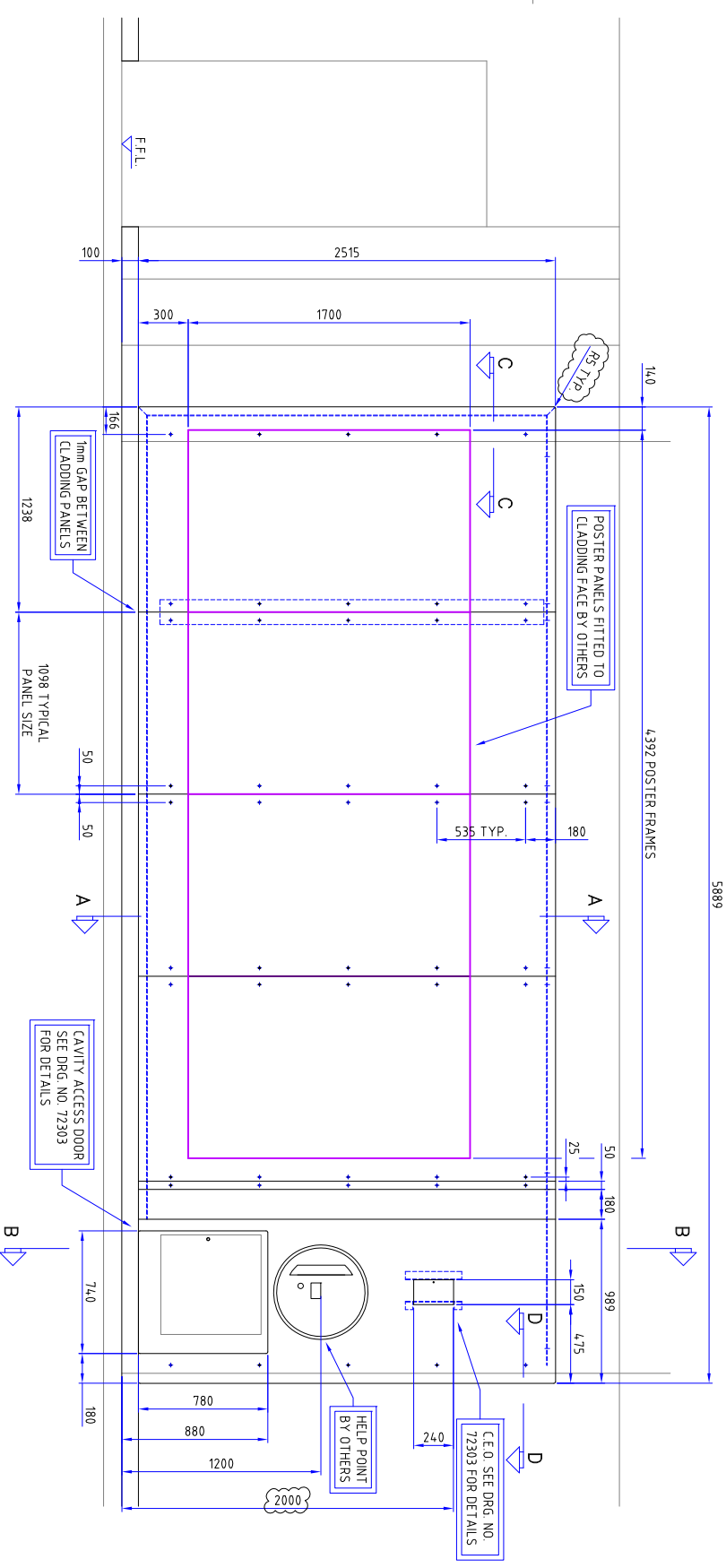
SECTION C - C SCALE 1:5



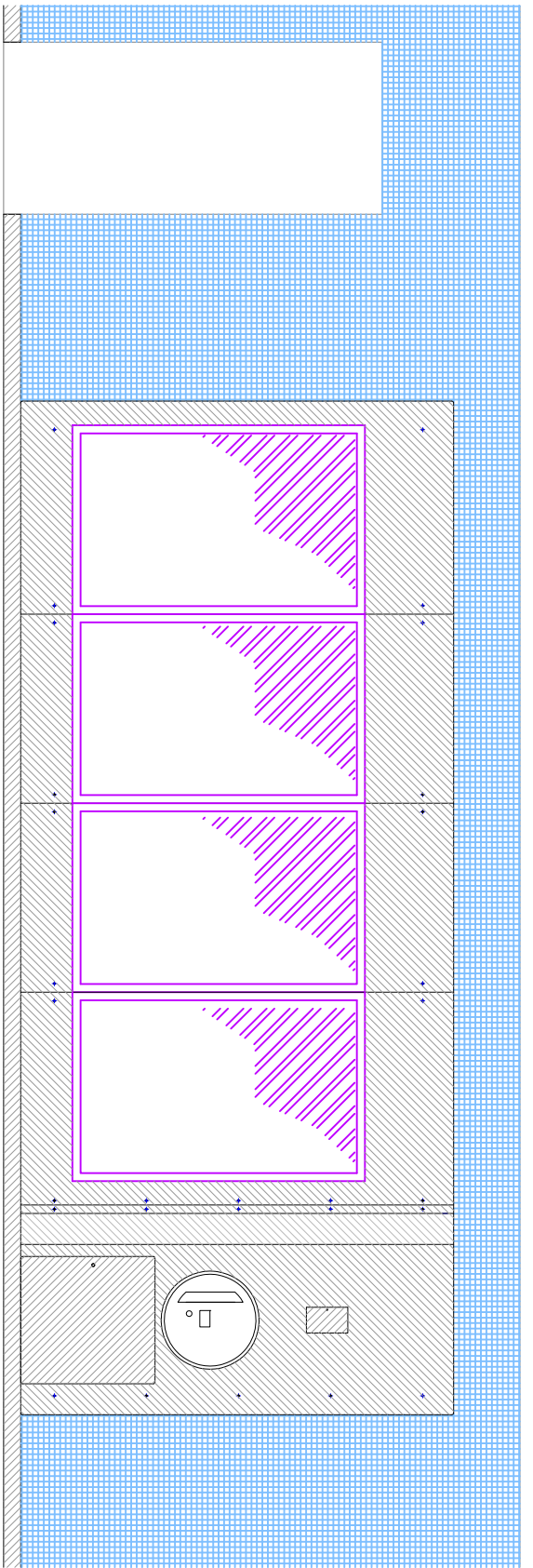
SECTION D - D SCALE 1:5



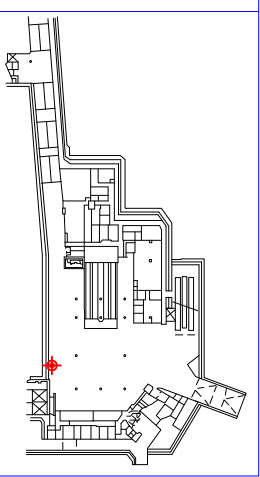
DETAIL A SCALE 1:5 DETAIL B SCALE 1:5



FRONT ELEVATION CLADDING



FRONT ELEVATION CLADDING RENDERED



| MOD NO. | DATE     | DETAILS OF MODIFICATION                           | CHECKED |
|---------|----------|---|---------|
| A       | 10.11.08 | DETAIL B ADDED                                    | G.E.C.  |
| B       | 12.11.08 | GENERAL REVISIONS AS PER ARCHITECT'S COMMENTS     | G.E.C.  |
| C       | 20.11.08 | FRAME SIZE INCREASED TO ACCOMMODATE CAVITY ACCESS | G.E.C.  |
| D       | 03.12.08 | R.S.A. EDGING REDUCED TO 50mm                     | G.E.C.  |
| E       | 09.12.08 | R.S.A. EDGING INCREASED TO 54mm                   | G.E.C.  |
| F       | 17.12.08 | HELP POINT SIZE CONFIRMED                         | G.E.C.  |
| G       | 31.01.09 | CE.O. DOOR HEIGHT REDUCED TO 5mm                  | G.E.C.  |

GENERAL NOTES:  
 ALL MATERIAL 316 GRADE STAINLESS STEEL.  
 ALL WELDS LEFT AS LAID AND ACID CLEANED, UNLESS OTHERWISE STATED.  
 ALL VISIBLE SURFACES SHOT PENEED TO APPROVED SAMPLE FINISH.  
 ALL VISIBLE FIXINGS TO BE M6 CSK SETS.  
 ALL EXPOSED EDGES TO BE GROUND SMOOTH.  
 EARTH BONDING REQUIRED TO CLADDING PANELS AND FRAMING.  
 SEE DRG. NO. 72303 FOR REAR FRAMEWORK DETAILS, C.E.O. DETAIL AND CAVITY ACCESS DOOR DETAIL.

**AS-BUILT DRAWING**

Marked-up By: \_\_\_\_\_  
 Checked: \_\_\_\_\_

|           |            |      |
|-----------|------------|------|
| Signature | Print Name | Date |
|           |            |      |

DESIGNED BY: **Hi-Spec**  
**HI-SPEC ENGINEERING LTD**  
 UNIT 9 WINDHILL IND. EST., WINDHILL, FOWEY, CORNWALL, PL23 1HB  
 TEL: 01750 838844 FAX: 01750 838811

CONTRACT NO: KEO309  
 DRAWN BY: G. COOKE  
 05.11.08

APPROVED BY: G. COOKE  
 06.11.08

ORIGINAL SCALE/FRAME: DO NOT SCALE  
 1:20 @ A1

TITLE: STAINLESS STEEL CLADDING LAYOUT  
 EAST WALL PANEL GRID 20 - 19

DRG. NO.: **R946/BBCEL/NTH/SSWP/**  
**DRG/GEN/XXXX**